

# ImmunoGuide®

## Instructions for Use

### Antibody to Tocilizumab ELISA

Enzyme immunoassay for the semi-quantitative determination of free antibodies to Tocilizumab in serum and plasma

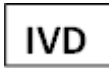
REF: IG-BB108



12X8



2-8°C



**TANI Medikal Ltd. Sti.**  
**Turan Gunes Bulvari Korman Sitesi 51/J 06550 Ankara**  
**Tel : +90 312 440 90 20**  
**Fax : +90 312 440 35 15**  
**e-mail: [info@immunoguide.com](mailto:info@immunoguide.com)**  
**[www.immunoguide.com](http://www.immunoguide.com)**

<b><u>Contents</u></b>	<b><u>Page</u></b>
1. Intended Use	2
2. Summary and Explanation	2
3. Principle of the Test	2
4. Warnings and Precautions	2
5. Storage and Stability of the Kit	3
6. Specimen Collection, Handling and Storage	3
7. Contents of the Kit	4
8. Materials Required but not Supplied	4
9. Procedure Notes	4
10. Pre-Test Setup Instructions	5
10.1. Preparation of Components	5
10.2. Dilution of Samples	5
11. Test Procedure	5
11.1. General Remarks	5
11.2. Assay Procedure	6
11.3. Quality Control	6
11.4. Calculation of Results	7
12. Assay characteristics	8
12.1. Specificity	8
12.2. Sensitivity	9
12.3. Precision	10
13. Automation	10
14. References	11

## 1. INTENDED USE

Enzyme immunoassay for the semi-quantitative determination of free antibodies to Tocilizumab in serum and plasma.

## 2. SUMMARY AND EXPLANATION

The drug Tocilizumab (trade name Actemra®) is a humanized monoclonal antibody (mAb) that specifically targets both soluble interleukin-6 receptor (sIL-6R) and membrane bound interleukin-6 receptor (mIL-6R) with a high affinity, thereby preventing pro-inflammatory effects of IL-6. To present, the application of Tocilizumab is licensed for the treatment of RA, systemic juvenile idiopathic arthritis (sJIA) and Castleman's disease and represents a favourable efficacy in these diseases. In the 24 week, controlled clinical studies, a total of 2876 patients have been tested for anti-Tocilizumab antibodies. Forty-six patients (2%) developed positive anti-Tocilizumab antibodies, of whom 5 had an associated, medically significant, hypersensitivity reaction leading to withdrawal. Thirty patients (1%) developed neutralizing antibodies. The data reflect the percentage of patients whose test results were positive for antibodies to Tocilizumab in specific assays.

The ImmunoGuide Antibody to Tocilizumab ELISA Kit can be efficiently used for monitoring Anti-Tocilizumab antibodies during therapy and offers the clinician a tool for decision on possible preventive measures to reduce Anti-Tocilizumab antibodies.

## 3. PRINCIPLE OF THE TEST

This *ImmunoGuide* anti-drug antibody(ies) (ADA) kit is a bridging type ELISA for the determination of free antibodies against the drug Tocilizumab in serum and plasma samples. During the first incubation period, ADA in serum or plasma samples are captured by the drug coated on the microtiter wells. After washing away the unbound components from samples, a peroxidase-labelled drug conjugate is added and then incubated. ADA, if present in sample, will make a bridge, with its identical Fab arms, between the drug coated on the well and the other drug molecule labelled with peroxidase. After a second washing step, the bound enzymatic activity is detected by addition of tetramethylbenzidine (TMB) chromogen-substrate. Finally, the reaction is terminated with stop solution. The positive reaction is expected to be related to the presence of ADA in the sample.

## 4. WARNINGS AND PRECAUTIONS

1. Before starting the assay, read the instructions completely and carefully. Use the valid version of the package insert provided with the kit. Be sure that everything is understood. For further information (clinical background, test performance, automation protocols, alternative applications, literature, etc.) please refer to the local distributor.

2. In case of severe damage of the kit package, please contact *Tani Medikal* or your supplier in writing, latest one week after receiving the kit. Do not use damaged components in test runs, but keep safe for complaint related issues.
3. Obey lot number and expiry date. Do not mix reagents of different lots. Do not use expired reagents.
4. Follow good laboratory practice and safety guidelines. Wear lab coats, disposable latex gloves and protective glasses where necessary.
5. Reagents of this kit containing hazardous material may cause eye and skin irritations. See MATERIALS SUPPLIED and labels for details.
6. Chemicals and prepared or used reagents have to be treated as hazardous waste according to the national biohazard safety guidelines or regulations.
7. Avoid contact with Stop solution. It may cause skin irritations and burns.
8. If any component of this kit contains human serum or plasma it is indicated and if so, it have been tested and were found to be negative for HIV I/II, HBsAg and HCV. However, the presence of these or other infectious agents cannot be excluded absolutely and therefore reagents should be treated as potential biohazards in use and for disposal.
9. Some reagents contain sodium azide ( $\text{NaN}_3$ ) as preservatives. In case of contact with eyes or skin, flush immediately with water.  $\text{NaN}_3$  may react with lead and copper plumbing to form explosive metal azides. When disposing reagents, flush with large volume of water to avoid azide build-up

## 5. STORAGE AND STABILITY OF THE KIT

The kit is shipped at ambient temperature and should be stored at 2-8°C. Keep away from heat or direct sun light. The storage and stability of specimen and prepared reagents is stated in the corresponding chapters. The microtiter strips are stable up to the expiry date of the kit in the broken, but tightly closed bag when stored at 2-8°C.

## 6. SPECIMEN COLLECTION, HANDLING AND STORAGE

### Serum, Plasma (EDTA, Heparin)\*

The usual precautions for venipuncture should be observed. It is important to preserve the chemical integrity of a blood specimen from the moment it is collected until it is assayed. Do not use grossly hemolytic, icteric or grossly lipemic specimens. Samples appearing turbid should be centrifuged before testing to remove any particulate material.

Storage:	2-8°C	≤-20°C (Aliquots)	Keep away from heat or direct sun light Avoid repeated freeze-thaw cycles
Stability:	3 d	6 mon	

\* Drug administration/infusion may camouflage/mask the presence of anti-drug antibodies (ADA) in serum/plasma samples. Therefore, blood sampling time is also critical for detection of ADA. It is proposed to obtain blood sample just before administration of the drug.

## 7. CONTENTS OF THE KIT

QUANTITY	COMPONENT
1 x 12 x 8	<b>Microtiter Plate</b> Break apart strips pre-coated with the drug Tocilizumab.
1 x 1 mL	<b>Negative Control</b> Ready to use. Contains serum and <15 mM NaN <sub>3</sub> .
1 x 1 mL	<b>Positive Control</b> Ready to use. Contains Tocilizumab-specific antibody and <15 mM NaN <sub>3</sub> .
1 x 15 mL	<b>Dilution Buffer</b> Ready to use. Contains orange dye, proteins and <15 mM NaN <sub>3</sub> .
1 x 12 mL	<b>Assay Buffer</b> Blue colored. Ready to use. Contains proteins and <15 mM NaN <sub>3</sub> .
1 x 12 mL	<b>Enzyme Conjugate</b> Red colored. Ready to use. Contains horseradish peroxidase(HRP)-conjugated Tocilizumab, Proclin <sup>®</sup> and stabilizers.
1 x 12 mL	<b>TMB Substrate Solution</b> Ready to use. Contains 3,3',5,5'-Tetramethylbenzidine (TMB).
1 x 12 mL	<b>Stop Solution</b> Ready to use. 1 N Hydrochloric acid (HCl).
1 x 50 mL	<b>Wash Buffer, Concentrate (20x)</b> Contains buffer, Tween <sup>®</sup> 20 and Kathon <sup>™</sup> .
2 x 1	<b>Adhesive Seal</b> For sealing microtiter plate during incubation.

## 8. MATERIALS REQUIRED BUT NOT SUPPLIED

1. Micropipettes (< 3% CV) and tips to deliver 5-1000 µL.
2. Bidistilled or deionised water and calibrated glasswares (e.g. flasks or cylinders).
3. Wash bottle, automated or semi-automated microtiter plate washing system.
4. Microtiter plate reader capable of reading absorbance at 450 nm (reference wavelength at 600-650 nm is optional).
5. Absorbent paper towels, standard laboratory glass or plastic vials, and a timer.

## 9. PROCEDURE NOTES

1. Any improper handling of samples or modification of the test procedure may influence the results. The indicated pipetting volumes, incubation times, temperatures and pre-treatment steps have to be performed strictly according to the instructions. Use calibrated pipettes and devices only.

2. Once the test has been started, all steps should be completed without interruption. Make sure that required reagents, materials and devices are prepared readily at the appropriate time. Allow all reagents and specimens to reach room temperature (20-25 °C) and gently swirl each vial of liquid reagent and sample before use. Mix reagents without foaming.
3. Avoid contamination of reagents, pipettes and wells/tubes. Use new disposable plastic pipette tips for each reagent, standard or specimen. Do not interchange the caps of vials. Always cap not used vials. Do not reuse wells or reagents.
4. Use a pipetting scheme to verify an appropriate plate layout.
5. Incubation time affects results. All wells should be handled in the same order and time sequences. It is recommended to use an 8-channel Micropipettor for pipetting of solutions in all wells.
6. Microplate washing is important. Improperly washed wells will give erroneous results. It is recommended to use a multichannel pipette or an automatic microplate washing system. Do not allow the wells to dry between incubations. Do not scratch coated wells during rinsing and aspiration. Rinse and fill all reagents with care. While rinsing, check that all wells are filled precisely with Wash Buffer, and that there are no residues in the wells.
7. Humidity affects the coated wells. Do not open the pouch until it reaches room temperature. Unused wells should be returned immediately to the resealed pouch including the desiccant.

## 10. PRE-TEST SETUP INSTRUCTIONS

### 10.1. Preparation of Components\*

Dilute/dissolve	Component		Diluent	Relation	Remarks	Storage	Stability
10 mL	Wash Buffer	up to 200 mL	Distilled Water	1:20	Warm up at 37°C to dissolve crystals. Mix vigorously.	2-8 °C	4 w

\* Prepare Wash Buffer before starting the assay procedure.

### 10.2. Dilution of Samples<sup>a,b</sup>

Sample	To be diluted	With	Remarks
Serum/ Plasma	1:10	Dilution Buffer	For dilution at 1:10; 10 µL Sample + 90 µL Dilution Buffer

<sup>a</sup> Negative and Positive Controls are ready-to-use and should NOT be diluted with the dilution buffer.

<sup>b</sup> Incubate 1:10 diluted serum/plasma samples for 15 min at room temperature (20-25°C) before pipetting 50 µL of each 1:10 diluted sample per well for analysis.

## 11. TEST PROCEDURE

### 11.1. GENERAL REMARKS

11.1.1. Before performing the assay, samples and assay kit should be brought to room temperature (about 30 minutes beforehand) and ensure the homogeneity of the solution.

11.1.2. All Standards should be run with each series of unknown samples.

11.1.3. Standards should be subject to the same manipulations and incubation times as the samples being tested.

11.1.4. All steps of the test should be completed without interruption.

11.1.5. Use new disposable plastic pipette tips for each reagent, standard or specimen in order to avoid cross contamination.

## 11.2. ASSAY PROCEDURE

1.	Pipette <b>100 µL</b> of <b>Assay Buffer</b> into each of the wells to be used.
2.	Pipette <b>50 µL</b> of each <b>Ready-to-Use Negative Control, Ready-to-Use Positive Control, and 1:10 Diluted Samples (as described in section 10.2)</b> into the respective wells of the microtiter plate. Bubble formation during the pipetting of standards and samples must be avoided. <u>Wells</u> A1: Negative Control B1: Negative Control C1: Positive Control D1 and so on: Diluted samples (Serum/Plasma)
3.	Cover the plate with adhesive seal. Shake plate carefully by tapping several times. <b>Incubate the plate on a bench top for 60 min at room temperature (RT, 20-25°C).</b>
4.	Remove adhesive seal. Aspirate or decant the incubation solution. Wash the plate <b>3 X 300 µL</b> of <b>Diluted Wash Buffer</b> per well. Remove excess solution by tapping the inverted plate on a paper towel.
5.	Pipette <b>100 µL</b> of <b>Enzyme Conjugate</b> (HRP-drug) into each well.
6.	Cover the plate with adhesive seal. Shake plate carefully by tapping several times. <b>Incubate the plate on a bench top for 60 min at room temperature (RT, 20-25°C).</b>
7.	Remove adhesive seal. Aspirate or decant the incubation solution. Wash the plate <b>3 X 300 µL</b> of <b>Diluted Wash Buffer</b> per well. Remove excess solution by tapping the inverted plate on a paper towel.
8.	Pipette <b>100 µL</b> of Ready-to-Use <b>TMB</b> Substrate Solution into each well.
9.	<b>Incubate 15 min</b> at RT. Avoid exposure to direct sunlight..
10.	Stop the substrate reaction by adding <b>100 µL</b> of <b>Stop Solution</b> into each well. Briefly mix contents by gently shaking the plate. Color changes from blue to yellow.
11.	Measure optical density (OD) with a photometer at <b>450 nm</b> (Reference at OD620 nm is optional) within <b>15 min</b> after pipetting the Stop Solution.

## 11.3. QUALITY CONTROL

The test results are only valid if the test has been performed following the instructions. Moreover the user must strictly adhere to the rules of GLP (Good Laboratory Practice) or other applicable standards/laws. All standards/controls must be found within the acceptable ranges as stated below and/or label. If the criteria are not met, the run is not valid and should be repeated. In case of any deviation, the following technical issues should be reviewed: Expiration dates of (prepared) reagents, storage conditions, pipettes, devices, incubation conditions and washing methods.

#### 11. 4. CALCULATION OF RESULTS

For the run to be valid, the OD<sub>450 nm</sub> of the Positive Control should be  $\geq 0.500$  and the OD<sub>450 nm</sub> of each Negative Control should be  $\leq 0.150$ . If not, improper technique or reagent deterioration may be suspected and the run should be repeated.

**The results are evaluated by dividing each individual OD results by the Cut-off OD value. The results are expressed in arbitrary units (AU/mL).**

**Cut-off value = 2 x the mean OD<sub>450 nm</sub> of Negative Control = 3 AU/mL**

88 different naive samples have been measured for estimating the cut-off value. In order to avoid a sample from being reported as false positive the cut-off value was determined by 2 times of the mean of Negative Control. All 88 screened naive samples show ODs lower than the cut-off value.

Samples which have an equal and higher OD than the cut-off value are considered to be positive.

Range	Interpretation
$\geq$ Cut-off (3 AU/mL)	POSITIVE
$<$ Cut-off (3 AU/mL)	NEGATIVE

#### **An example for semi-quantitative calculation for a positive sample**

OD of patient's sample = 0.396

The mean OD of Negative Control = 0.066

Cut-off value (3 AU/mL) =  $2 \times 0.066 = 0.132$

Result for the patient's sample =  $0.396/0.132 \times 3 \text{ AU/mL} = 9 \text{ AU/mL}$

The results themselves should not be the only reason for any therapeutical consequences. They have to be correlated to other clinical observations. In addition, the positive reaction should be clarified whether it is true or false positive following the confirmatory assay as mentioned in section "12.1. Specificity" below.



## 12. ASSAY CHARACTERISTICS

### 12.1. SPECIFICITY

The detection of ADA formation is highly dependent on the sensitivity and specificity of the assay used.

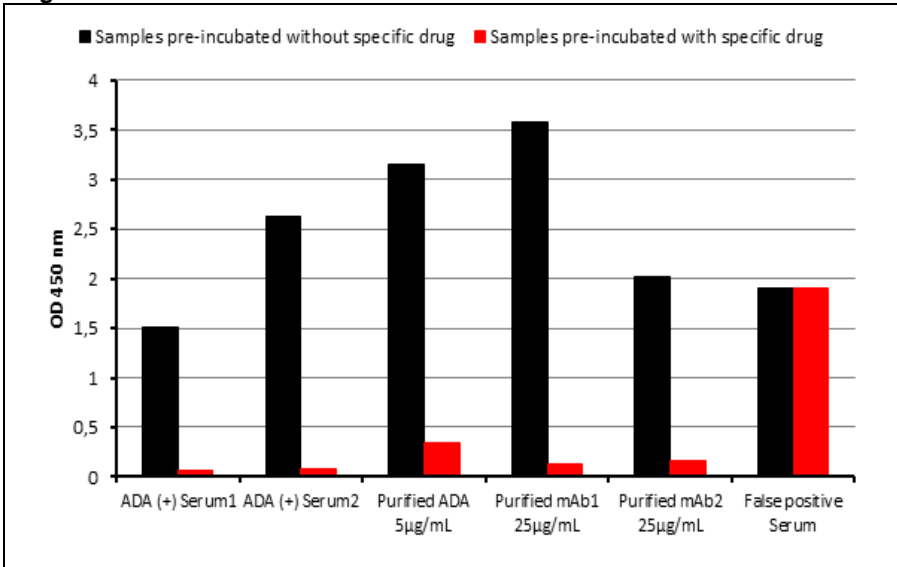
The initial screening assay should be sensitive to low and high-affinity ADA. Endogenous and exogenous components in serum or plasma may influence assay results. Measuring immune responses to therapeutic protein products that possess Ig tails, such as mAb and Fc-fusion proteins, may be particularly difficult when RF is present in serum or plasma. RF is generally an IgM antibody that recognizes IgG, although other Ig specificities have been noted. Therefore, there is frequently a need to dilute patient samples and to make approach for minimizing interference from RF to maintain a reasonable ability to detect ADA. However, dilution and/or addition of RF-blocking reagents may not solve all potential interference related with matrix components contributing to non-specific signal in samples.

If the serum/plasma sample of a patient, a candidate for a specific monoclonal drug treatment, is negative at the time before starting drug therapy and become positive during treatment, it could be concluded that the induction of the specific ADA is suspected in this individual. As shown in Figure 1, the true positive reaction of the sample is inhibited by pre-incubation of the sample with the specific drug itself (samples are spiked with certain amount of drug). However, inhibition was not observed in false positive reaction related with other components in sample (Figure 1).

Based on the approach used in calculating the assay cut-off value of anti-drug antibody (ADA) ELISAs, approximately 1-5% of tested samples are expected to generate false-positive ADA response during initial screening analysis. Therefore, further confirmation of the specificity of the ADA activity in the samples, identified as positive, is also recommended by recent publications. In addition, the FDA released a guidance paper on immunogenicity testing of therapeutic proteins: (<http://www.fda.gov/downloads/Drugs/GuidanceComplianceRegulatoryInformation/Guidances/UCM192750.pdf>)

In order to confirm the specificity of the ADA signal, a Confirmatory Assay, (competitive drug inhibition test), is proposed by ImmunoGuide. The Confirmation Test is performed with the Confirmatory Reagent. (coded IG-CR108) This Confirmatory Reagent is available as a separate product and can be obtained from ImmunoGuide upon request

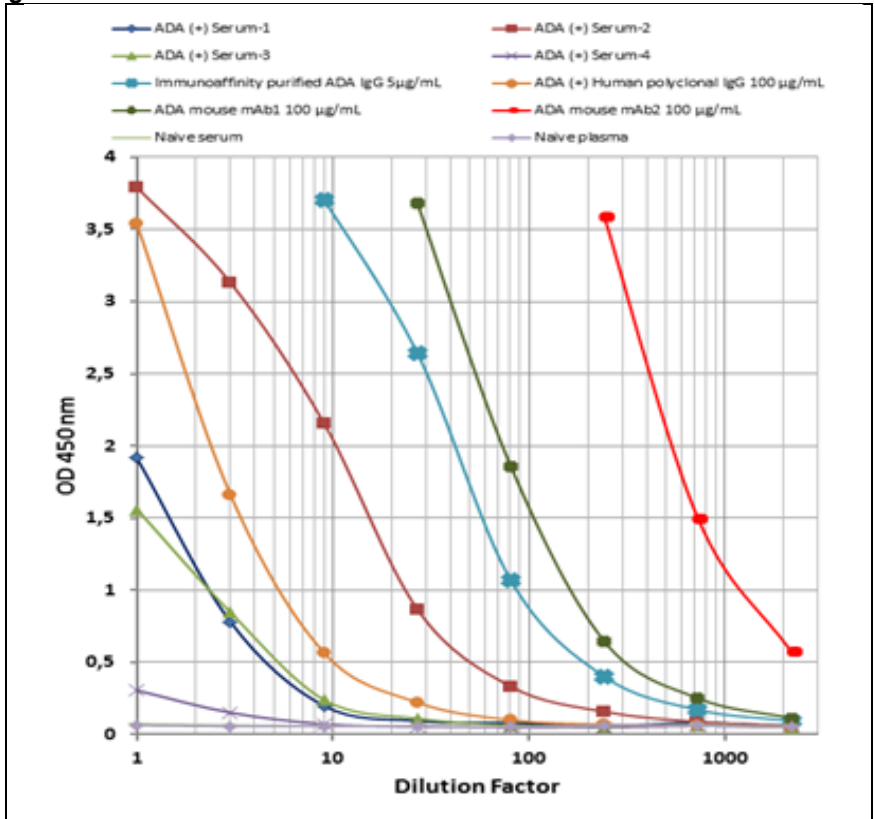
Figure 1.



## 12.2. SENSITIVITY

Generally, the sensitivity of the ADA assay is calculated as the lowest concentration of the positive control that can consistently generate a positive signal. However, as shown in Figure 2 below, data obtained at the ImmunoGuide Laboratory, the assay sensitivity also differs significantly depending on the high vs low affinity antibody used for the construction of the standard curve in the assay system. For example, when the immunoaffinity-purified ADA was exogenously added into naive serum, it was observed that the lowest detectable level that can be clearly distinguished from the negative control value is 7ng/mL by the ImmunoGuide bridging ELISA. It is much lower when mAb2 is used instead. Therefore, it is clear that the assay sensitivity will be highly dependent on the properties of a particular positive control to be used in the assay (Figure 2).

Figure 2.



### 2.3. PRECISION OF THE KIT

Intra-assay CV: <10%.

Inter-assay CV: <10%

### 13. AUTOMATION

The *ImmunoGuide* Anti Drug Antibody (ADA) ELISA kits are suitable also for being used by an automated ELISA processor.

#### 14. REFERENCES

1. Inciarte-Mundo J, Ruiz-Esquide V, Hernández MV, Cañete JD, Cabrera-Villalba SR, Ramirez J, Yagüe J, Sanmarti R. Calprotectin more accurately discriminates the disease status of rheumatoid arthritis patients receiving tocilizumab than acute phase reactants. *Rheumatology (Oxford)*. 2015 Aug 4. pii: kev251. [Epub ahead of print]
2. Kennedy GA, Varelias A, Vuckovic S, Le Texier L, Gartlan KH, Zhang P, Thomas G, Anderson L, Boyle G, Cloonan N, Leach J, Sturgeon E, Avery J, Olver SD, Lor M, Misra AK, Hutchins C, Morton AJ, Durrant ST, Subramoniapillai E, Butler JP, Curley CI, MacDonald KP, Tey SK, Hill GR. Addition of interleukin-6 inhibition with tocilizumab to standard graft-versus-host disease prophylaxis after allogeneic stem-cell transplantation: a phase 1/2 trial. *Lancet Oncol*. 2014;15(13):1451-9
3. Besada E. Potential patient benefit of a subcutaneous formulation of tocilizumab for the treatment of rheumatoid arthritis: a critical review. *Patient Prefer Adherence*. 2014;8:1051-9.
4. Ohta S, Tsuru T, Terao K, Mogi S, Suzuki M, Shono E, Ishida Y, Tarumi E, Imai M. Mechanism-based approach using a biomarker response to evaluate tocilizumab subcutaneous injection in patients with rheumatoid arthritis with an inadequate response to synthetic DMARDs (MATSURI study). *J Clin Pharmacol*. 2014;54(1):109-19.
5. Lee SJ, Park W, Park SH, Shim SC, Baek HJ, Yoo DH, Kim HA, Lee SK, Lee YJ, Park YE, Cha HS, Park JK, Lee EY, Lee EB, Song YW. Low baseline interleukin-17A levels are associated with better treatment response at 12 weeks to tocilizumab therapy in rheumatoid arthritis patients. *J Immunol Res*. 2015;2015:487230. doi: 10.1155/2015/487230. Epub 2015 Apr 2
6. Ogata A, Tanimura K, Sugimoto T, Inoue H, Urata Y, Matsubara T, Kondo M, Ueki Y, Iwahashi M, Tohma S, Ohta S, Saeki Y, Tanaka T; Musashi Study Investigators. Phase III study of the efficacy and safety of subcutaneous versus intravenous tocilizumab monotherapy in patients with rheumatoid arthritis. *Arthritis Care Res (Hoboken)*. 2014;66(3):344-54.
7. Mori S, Ueki Y. Primary lack of efficacy of infliximab therapy for rheumatoid arthritis: pharmacokinetic characterization and assessment of switching to tocilizumab. *Mod Rheumatol*. 2011;21(6):628-36.
8. Zhang X, Peck R. Clinical pharmacology of tocilizumab for the treatment of patients with rheumatoid arthritis. *Expert Rev Clin Pharmacol*. 2011 Sep;4(5):539-58. doi: 10.1586/ecp.11.33.
9. Burmester GR, Rigby WF, van Vollenhoven RF, Kay J, Rubbert-Roth A, Kelman A, Dimonaco S, Mitchell N. Tocilizumab in early progressive rheumatoid arthritis: FUNCTION, a randomised controlled trial. *Ann Rheum Dis*. 2015 Oct 28. pii: annrheumdis-2015-207628. doi: 10.1136/annrheumdis-2015-207628. [Epub ahead of print]
10. Gabay C, Riek M, Hetland ML, Hauge EM, Pavelka K, Tomšič M, Canhao H, Chatzidionysiou K, Lukina G, Nordström DC, Lie E, Ancuta I, Hernández MV, van Riel PL, van Vollenhoven R, Kvien TK. Effectiveness of tocilizumab with and without synthetic disease-modifying antirheumatic drugs in rheumatoid arthritis:

- results from a European collaborative study. *Ann Rheum Dis*. 2015 Sep 15. pii: annrheumdis-2015-207760. doi: 10.1136/annrheumdis-2015-207760
- 11.** Espinoza F, Jorgensen C, Pers YM. Efficacy of Tocilizumab in the treatment of Eosinophilic fasciitis: Report of one case. *Joint Bone Spine*. 2015 Jul 7. pii: S1297-319X(15)00101-3. doi: 10.1016/j.jbspin.2015.02.008. [Epub ahead of print]
- 12.** Roddy JV, Haverkos BM, McBride A, Leininger KM, Jaglowski S, Penza S, Klisovic R, Blum W, Vasu S, Hofmeister CC, Benson DM, Andritsos LA, Devine SM, Efebera YA. Tocilizumab for steroid refractory acute graft-versus-host disease. *Leuk Lymphoma*. 2015 Jul 3:1-5. [Epub ahead of print]
- 13.** Kim NH, Kim SK, Kim DS, Zhang D, Park JA, Yi H, Kim JS, Shin HC. Anti-proliferative action of IL-6R-targeted antibody tocilizumab for non-small cell lung cancer cells. *Oncol Lett*. 2015;9(5):2283-2288.
- 14.** Hammoudeh M, Al Awadhi A, Hasan EH, Akhlaghi M, Ahmadzadeh A, Sadeghi Abdollahi B Safety, Tolerability, and Efficacy of Tocilizumab in Rheumatoid Arthritis: An Open-Label Phase 4 Study in Patients from the Middle East. *Int J Rheumatol*. 2015;2015:975028. doi: 10.1155/2015/975028.
- 15.** Yang L, Xing R, Li C, Liu Y, Sun L, Liu X, Wang Y. Active immunization with Tocilizumab mimotopes induces specific immune responses. *BMC Biotechnol*. 2015 Jun 2;15:46. doi: 10.1186/s12896-015-0161-9.
- 16.** Burmester GR, Rubbert-Roth A, Cantagrel A, Hall S, Leszczynski P, Feldman D, Rangaraj MJ, Roane G, Ludivico C, Bao M, Rowell L, Davies C, Mysler EF. Efficacy and safety of subcutaneous tocilizumab versus intravenous tocilizumab in combination with traditional DMARDs in patients with RA at week 97 (SUMMACTA). *Ann Rheum Dis*. 2015 Jun 8. pii: annrheumdis-2015-207281. doi: 10.1136/annrheumdis-2015-207281.
- 17.** Romão VC, Santos MJ, Polido-Pereira J, Duarte C, Nero P, Miguel C, Costa JA, Bernardes M, Pimentel-Santos FM, Barcelos F, Costa L, Melo Gomes JA, Pereira da Silva JA, Cunha Branco J, Canas da Silva J, Pereira da Silva JA, Fonseca JE, Canhão H. Comparative Effectiveness of Tocilizumab and TNF Inhibitors in Rheumatoid Arthritis Patients: Data from the Rheumatic Diseases Portuguese Register, Reuma.pt. *Biomed Res Int*. 2015;2015:279890. doi: 10.1155/2015/279890
- 18.** Wang G, Mu R, Xu H. Management of rheumatoid arthritis in People's Republic of China - focus on tocilizumab and patient considerations. *Int J Gen Med*. 2015;8:187-94.
- 19.** Bensaoud N, Rostom S, Bahiri R, Hajjaj-Hassouni N. Efficacy of tocilizumab on MRI-determined bone oedema in rheumatoid arthritis. *Clin Rheumatol*. 2015;34(6):1031-7.
- 20.** Narváez J, Díaz-Torné C, Magallares B, Hernández MV, Reina D, Corominas H, Sanmartí R, de la Serna AR, Llobet JM, Nolla JM. Comparative effectiveness of tocilizumab with either methotrexate or leflunomide in the treatment of rheumatoid arthritis. *PLoS One*. 2015 Apr 1;10(4):e0123392. doi: 10.1371/journal.pone.0123392. eCollection 2015